

Thomas Gainsborough Sixth Form offer WiFi for personal devices whilst onsite.

In order to access the internet please follow the instructions below (please note there are different instructions depending on your device).

You are advised to make sure that you have adequate anti virus on you device, and Thomas Gainsborough School and Sixth Form take no responsibility if anything happens to your device whilst connected to our WiFi.

How to Connect to TGS-GUEST Wifi on a Windows Laptop

Open wifi settings and select "TGS-GUEST" you will then be prompted for a username and password- please put in your normal network login e.g.tgs\jbloggs then your usual password

Open up your web browser and type in the following URL:

<http://10.164.208.10/getcert>

Click Download certificate

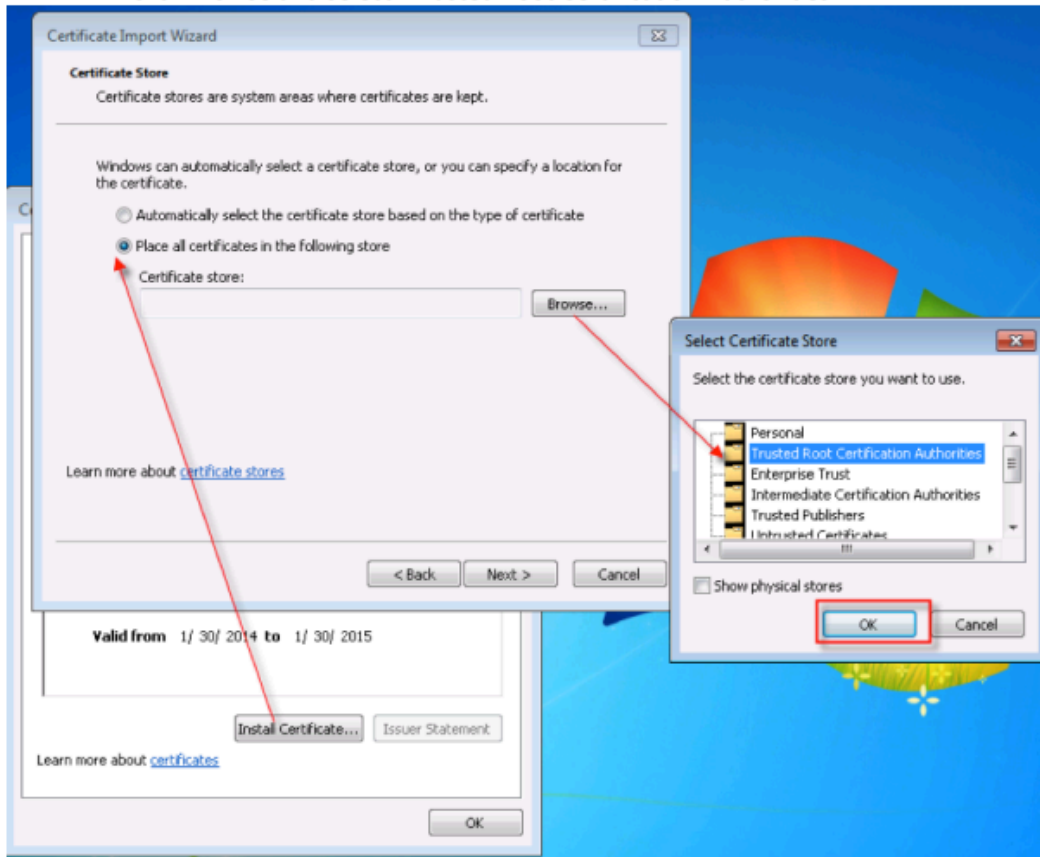
Double-click on the certificate

Click Install Certificate to launch the Certificate Import Wizard



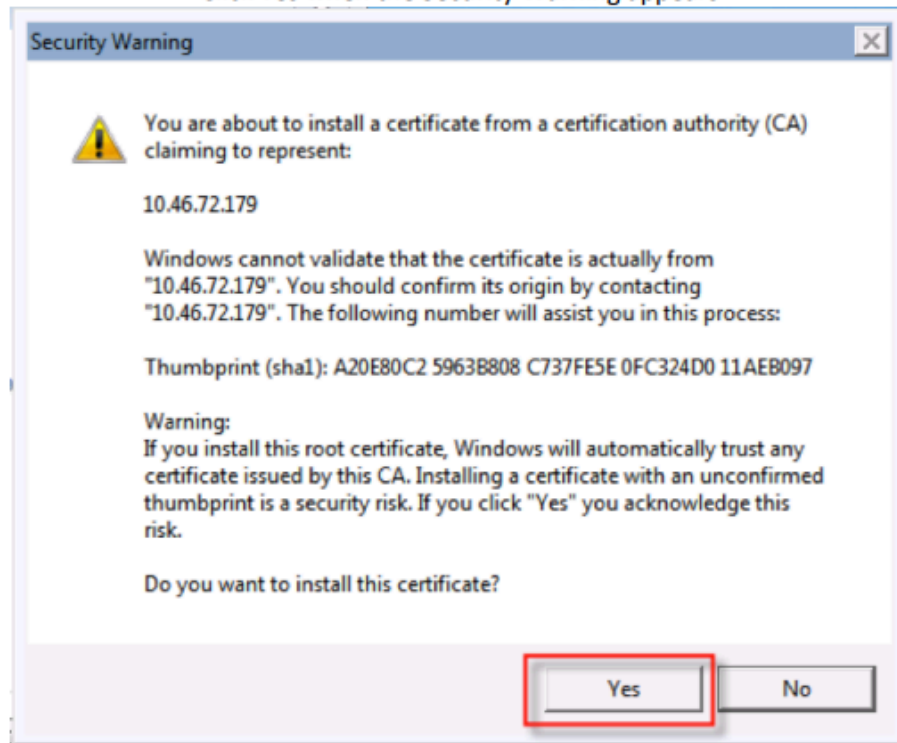
On the Certificate Store page, check "Place all certificates in the following store"

Click Browse and select "Trusted Root Certification Authorities"

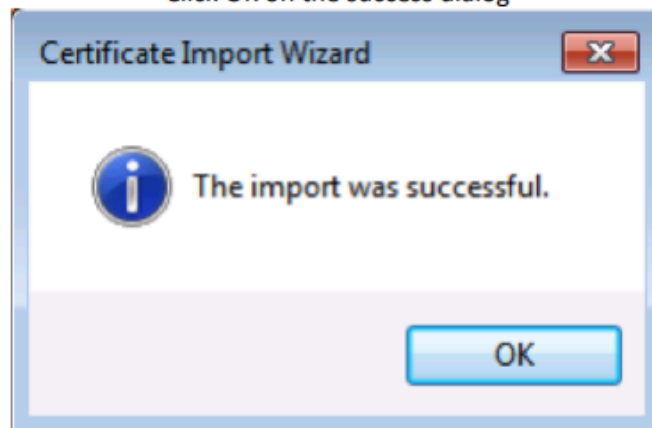


Click Next and then Finish

Click Yes when the Security Warning appears



Click OK on the success dialog



Restart your browser

How to connect to the WiFi on an iPhone, iPad, iPod IOS (Safari)

Connect to the TGS Guest wifi network by putting in your credentials for using the school computer, for example: TGS\JBloggs and usual password

When connected to the wifi open up your web browser and type in the url:
10.164.208.10/getcert

Click the Download the certificate button

In the settings app go to VPN & Device Management

Select Guardian HTTPS Inspection CA under downloaded profile

Press Install

If prompted, enter or configure your password to confirm

Navigate to Settings > General > About > Certificate Trust Settings and enable Full Trust for Root certificates

How to connect to the WiFi from a Chromebook or Chrome OS

Connect to the TGS Guest wifi network by putting in your credentials for using the school computer, for example: TGS\JBloggs and usual password

When connected to the wifi open up your web browser and type in the url:
10.164.208.10/getcert

Click the **Download the certificate** button

Go to **Menu > Settings**

Expand **Show advanced settings**

Go to **HTTPS/SSL** and click **Manage certificates...**

Go to **Authorities** and click **Import...**

Navigate to your download directory and select the file you downloaded earlier

Select **Trust this certificate for identifying websites**

Click **OK**

Click **Finished** and close the settings tab

How to connect to WiFi from Android (Chrome)

Connect to the TGS Guest wifi network by putting in your credentials for using the school computer, for example: TGS\JBloggs and usual password

When connected to the wifi open up your web browser and type in the url:
10.164.208.10/getcert

Click the **Download the certificate** button

When prompted, enter a name of your choice for the certificate

Click **OK**

If prompted, enter or configure your password to confirm

If prompted, enter a certificate name

If prompted, from the **Credentials use** drop-down select **VPN and apps**

Click **OK**

To confirm certificate installation was successful, navigate to **Settings > Trusted credentials**

Select the **User** tab to view user installed certificates

How to connect to WiFi from MAC OS

Connect to the TGS Guest wifi network by putting in your credentials for using the school computer, for example: TGS\JBloggs and usual password

When connected to the wifi open up your web browser and type in the url:
10.164.208.10/getcert

Click the **Download the certificate** button and save the file

From the **Finder** menu, go to **Go > Utilities**.

Launch the **Keychain Access** application

From the **Keychains** panel, click **System**

From the **Category** panel, click **Certificates**

Create a new keychain by clicking the [+] at the bottom of the Keychain Access window

Navigate to your download directory and select the certificate file

Click **Open**

If prompted, enter your MAC password and click **Modify Keychain Access**

Double-click the relevant certificate in the list

Expand the **Trust** section

In the **When using this certificate** drop-down, select **Always Trust**

Close the certificate window

When prompted, enter your MAC password to confirm the changes